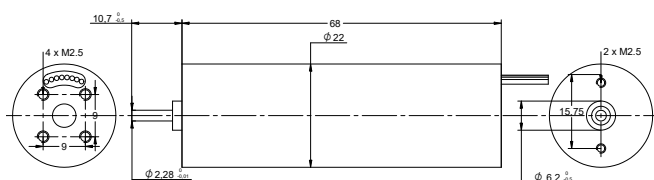
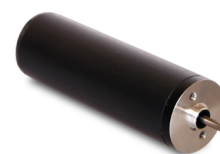


DRAWING (mm)



PHOTO

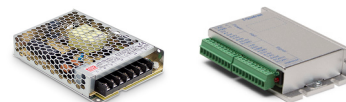


MODEL NO. DESIGNATION

BR2268 - VOLTAGE

Example: BR2268-12

ACCESSORIES



● C = customizations are offered on demand even for smaller quantities. Typical customizations are indicated with a green dot at column end. Please contact us for any customization request.

BRUSHLESS DC MOTOR DATA		BR2268-12	BR2268-24	C
Nominal voltage	V	12	24	
Commutator hall voltage	V	5 ~ 24	5 ~ 24	
No load speed	rpm	6500	6000	
No load current	A	0.5	0.4	
Nominal speed	rpm	3500	3800	
Nominal torque	mNm	20	20	
Nominal current	A	1.14	0.55	
Start/Stall torque	mNm	48	50	
Efficiency	%	53	61	
Nominal power	W	7.3	8	
Terminal resistance	Ω	2.9	12	
Terminal inductance	mH	1.1	4.3	
Torque constant	mNm/A	18	36	
Rotor inertia	gcm <sup>2</sup>	1.3	2.1	
Bearing type		Ball bearing		
Axial play at axial load < 3.5 N	mm	0.14		
Axial play at axial load > 3.5 N	mm	0.14		
Radial play	mm	0.02		
Max. dynamic axial load	N	2		
Max. radial load <sup>1</sup>	N	10		

NOTES

1. 10 mm from flange.

OTHER BRUSHLESS DC MOTOR DATA		BR2268-12	BR2268-24	C
Number of pole pairs		4		
Number of phases		3		
Weight	g	128	120	
Operating temperature	°C	-20 to 50		
Max. winding temperature	°C	130		
Motor insulation class		B		
IP rating		IP40		
Hall sensors and power harness length	mm	300		●
Power harness		UL1007 AWG26		●
Hall sensors harness		UL1007 AWG28		●
Shaft length from flange	mm	10.7		●
Shaft diameter Ø	mm	2.28		
Service life	h	10000		
Manufacturing standard		ISO9001   ISO14001   TS16949		

CABLE AND PIN CONFIGURATION

Power		Hall		C
Phase	Cable color	Phase	Cable color	
U	RED	HU	YEL	
V	BRN	HV	BRN	
W	BLK	HW	RED	
		+5V	BLU	
		GND	GRN	