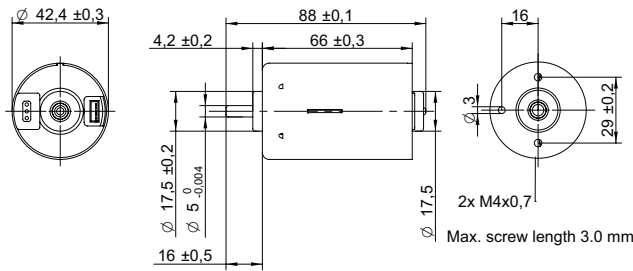


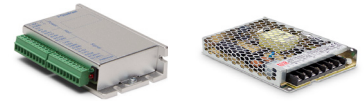
DRAWING (mm)



PHOTO



OPTIONS POWER SUPPLIES



● C = Customizations are offered on demand even for smaller quantities. Typical customizations indicated with green dot at column end. Please contact us for any customization request.

MOTOR TYPE

3-Phase, 120-degree, brushless DC Motor with integrated hall sensors.

MOTOR DATA	BT4266-12	BT4266-24	C
Nominal voltage	V 12	24	
Commutator (hall) voltage	V 3.3~5	3.3~5	
No load speed	rpm 6000		
No load current	mA 550	300	
Nominal speed	rpm 5200	5200	●
Nominal torque	mNm 51	91	
Nominal current	A 3	2.6	
Start/Stall torque	mNm 430	680	
Start/Stall current	A 22	17	
Max. efficiency	% 78	79	
Nominal power	W 28	49	
Terminal resistance	Ω 0.3	0.7	
Terminal inductance	mH 0.1	0.5	
Torque constant	mNm/A 20	40	
Speed constant	rpm/V 500	250	
Speed/ torque gradient	rpm/mNm 100	57	
Rotor inertia	gcm ² 155~156	157~159	

MECHANICAL DATA

Mechanical Data	BT4266-12	BT4266-24	C
Bearing type	Ball bearing		●
Axial play	mm 0.56	0.45	
Bearing radial clearance	μm 13		
Max. axial load (dynamic)	N 7.1		

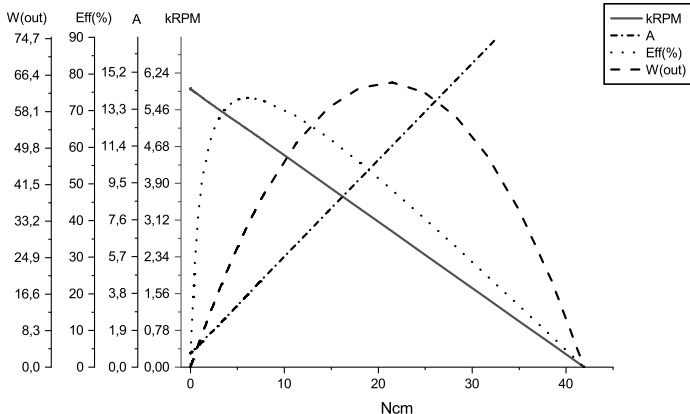
OTHER SPECIFICATIONS

Other Specifications	BT4266-12	BT4266-24	C
Number of pole pairs	3		
Number of phases	3		
Weight	g 380	390	
Typical noise level	dBA 42	38	
Operating temperature	°C -40 to +80		
Max. winding temperature	°C 150		
Motor insulation class	A		
IP rating	IP40		
Slot pole pairs	9S6P		
Rotor magnet	BNM-8		
Hall sensors and power harness length	mm 155 ± 10		●
Power harness end connector	A2502X-03P		●
Power harness	UL3132 20AWG 300V 150°C		●
Hall sensors harness end connector	KR1500 MX1.5mm		●
Hall sensors harness	UL10368 26AWG 300V 105°C		●
Shaft length from flange	mm 16		●
Shaft diameter ø	mm 5		
Housing material	SECD-0 1.4T		
Shaft material	SUS420 J2		
Magnet material	Bonding NdFeB		
Rotor balancing grade	G6.3		
Service life	h 5000		
Manufacturing standard	ISO9001 TS16949		

CABLE AND PIN CONFIGURATION EXTERNAL DRIVER

Power		Hall		C
Phase	Cable color	Phase	Cable color	
U	Brown	HU	Green	
V	Grey	HV	Blue	
W	White	HW	Yellow	
		+5V	Red	
		GND	Black	

MOTOR DATA DIAGRAM 12V



MOTOR DATA DIAGRAM 24V

