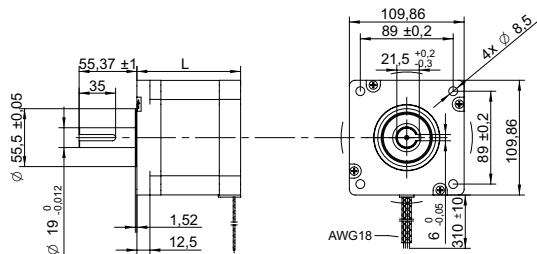
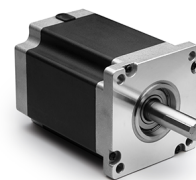


DRAWING (mm)



PHOTO



MODEL NO. DESIGNATION

SHW110 - STEP ANGLE - CURRENT

Example: SHW11099-18-550

OPTIONS DRIVER AND POWER SUPPLY



● C = customizations are offered on demand even for smaller quantities. Typical customizations are indicated with a green dot at column end. Please contact us for any customization request.

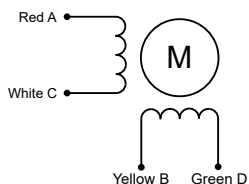
COMMON MOTOR DATA

		C
Step angle	°	1.8
Step angle accuracy ¹	%	± 5
Shaft material	X8CrNiS18-9 SUS303 ●	
Bearing type	Ball bearing ●	
Radial play ²	mm	0.02
Axial play ²	mm	0.08
Max. radial force ³	N	330
Max. axial force	N	100
Dielectric strength ⁴	V	600
Insulation resistance ⁵	MΩ	100
Operating temperature	°C	-20 to 50 ●
Insulation class	Class B	
IP rating	IP30 ●	
Connection harness	AWG18 310 mm ●	
Connector	Not in standard ●	

MODEL-SPECIFIC MOTOR DATA

		SHW11099-18-550	SHW110150-18-650	SHW110201-18-800
Model				
Graph		A	B	C
Holding torque	Nm	11	21	28
Detent torque	Nm	0.55	1.1	1.6
Rotor inertia	gcm ²	3000	5900	7500
Current phase	A	5.5	6.5	8
Resistance phase	Ω	0.7	0.72	0.67
Inductance	mH	9.8	12	12
Length	mm	99	150	201
Weight	kg	5	8.4	12

EXCITATION SEQUENCE TABLE



CW	A	C	B	D
1	●		●	
2		●	●	
3		●		●
4	●			●
1	●		●	

● = +Polarity

SPEED | TORQUE PERFORMANCE GRAPH PULL OUT

		A	B	C
Graph				
Supply voltage	V	130	130	130
Current phase	A	5.6	6.50	8

NOTES

1. Full step no load.
2. 450 g load.
3. 20 mm from shaft.
4. AC, 1 second.
5. 500 V, DC.

