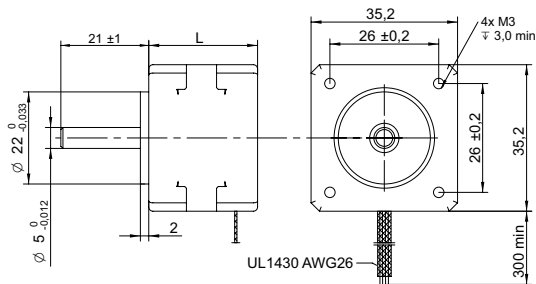


## DRAWING (mm)



## PHOTO



## MODEL NO. DESIGNATION

SHW35 - STEP ANGLE - CURRENT

Example: SHW3526-18-028

## OPTIONS DRIVER AND POWER SUPPLY



● C = customizations are offered on demand even for smaller quantities. Typical customizations are indicated with a green dot at column end. Please contact us for any customization request.

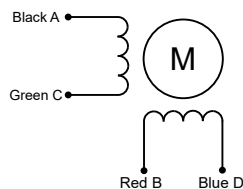
## COMMON MOTOR DATA

		C	
Step angle	°	1.8	
Step angle accuracy <sup>1</sup>	%	± 5	
Shaft material		X8CrNiS18-9   SUS303	●
Bearing type		Ball bearing	●
Radial play <sup>2</sup>	mm	0.02	
Axial play <sup>2</sup>	mm	0.08	
Max. radial force <sup>3</sup>	N	28	
Max. axial force	N	10	
Dielectric strength <sup>4</sup>	V	600	
Insulation resistance <sup>5</sup>	MΩ	100	
Operating temperature	°C	-20 to 50	●
Insulation class		Class B	
IP rating		IP30	●
Connection harness		UL 1430 AWG26   300 mm	●
Connector		Not in standard	●

## MODEL-SPECIFIC MOTOR DATA

Model	SHW3526-18-028	SHW3528-18-050	SHW3536-18-100	
Graph				
Holding torque	mNm	70	100	140
Detent torque	mNm	6	8	10
Rotor inertia	gcm <sup>2</sup>	10	11	14
Current   phase	A	0.28	0.5	1
Resistance   phase	Ω	26	20	2.7
Inductance	mH	27	14	4.3
Length	mm	26	28	36
Weight	kg	0.13	0.14	0.18

## EXCITATION SEQUENCE TABLE



CW	A	C	B	D
1	●		●	
2		●	●	
3		●		●
4	●			●
1	●		●	

● = +Polarity

## SPEED | TORQUE PERFORMANCE GRAPH PULL OUT

Graph	A	B	C	
Supply voltage	V	24	24	24
Current   phase	A	0.35	0.5	1

## NOTES

1. Full step no load.
2. 450 g load.
3. 20 mm from shaft.
4. AC, 1 second.
5. 500 V, DC.

