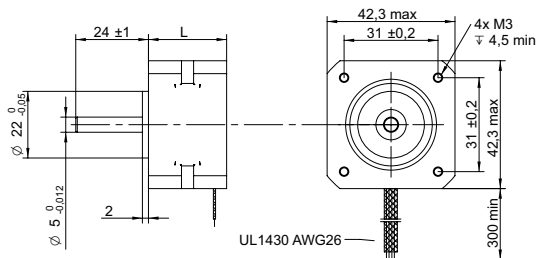
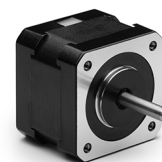


DRAWING (mm)



PHOTO



MODEL NO. DESIGNATION

SHW42 - STEP ANGLE - CURRENT

Example: SHW4226-18-040

OPTIONS DRIVER AND POWER SUPPLY



● C = customizations are offered on demand even for smaller quantities. Typical customizations are indicated with a green dot at column end. Please contact us for any customization request.

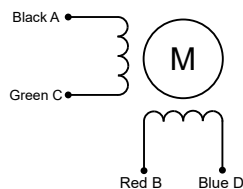
COMMON MOTOR DATA

		C
Step angle	°	1.8
Step angle accuracy ¹	%	± 5
Shaft material	X8CrNiS18-9 SUS303 ●	
Bearing type	Ball bearing ●	
Radial play ²	mm	0.02
Axial play ²	mm	0.08
Max. radial force ³	N	28
Max. axial force	N	10
Dielectric strength ⁴	V	600
Insulation resistance ⁵	MΩ	100
Operating temperature	°C	-20 to 50 ●
Insulation class	Class B	
IP rating	IP30 ●	
Connection harness	UL 1430 AWG26 300 mm ●	
Connector	Not in standard ●	

MODEL-SPECIFIC MOTOR DATA

Model	SHW4226-18-040	SHW4234-18-133	SHW4240-18-168	SHW4248-18-168	
Graph	A	B	C	D	
Holding torque	mNm	170	220	360	440
Detent torque	mNm	7.5	12	15	20
Rotor inertia	gcm ²	20	35	54	68
Current phase	A	0.4	1.3	1.7	1.7
Resistance phase	Ω	24	2.1	1.65	1.65
Inductance	mH	30	2.5	3.2	2.8
Length	mm	26	33.5	39.5	47.5
Weight	kg	0.15	0.22	0.28	0.35

EXCITATION SEQUENCE TABLE



CW	A	C	B	D
1	●		●	
2		●	●	
3		●		●
4	●			●
1	●		●	

● = +Polarity

SPEED | TORQUE PERFORMANCE GRAPH PULL OUT

Graph	A	B	C	D	
Supply voltage	V	36	36	36	36
Current phase	A	0.42	1.4	1.7	1.7

NOTES

1. Full step no load.
2. 450 g load.
3. 20 mm from shaft.
4. AC, 1 second.
5. 500 V, DC.

